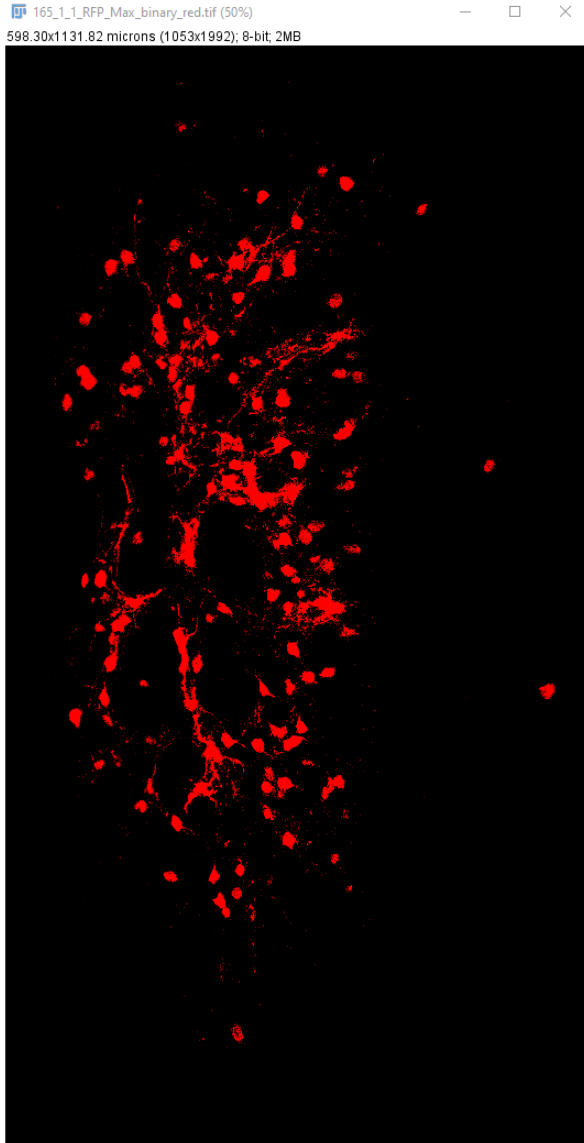
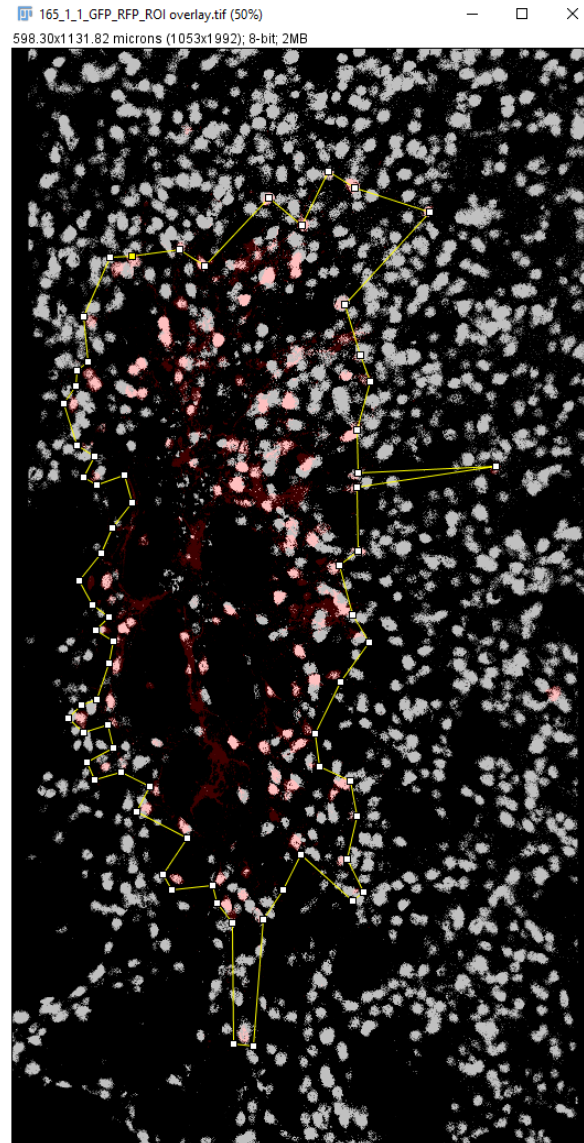


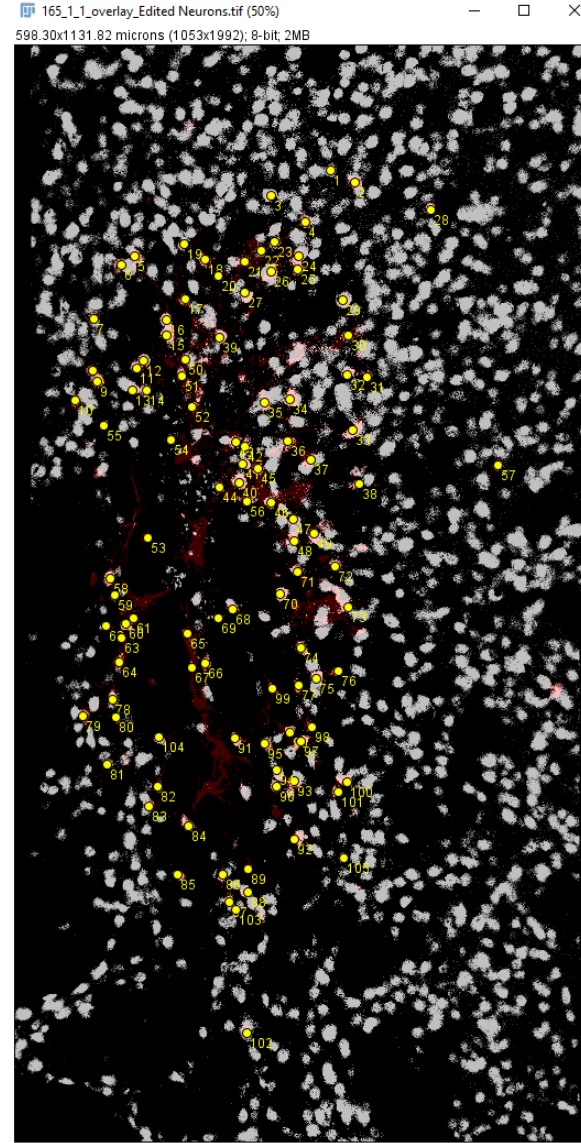
RFP signal alone



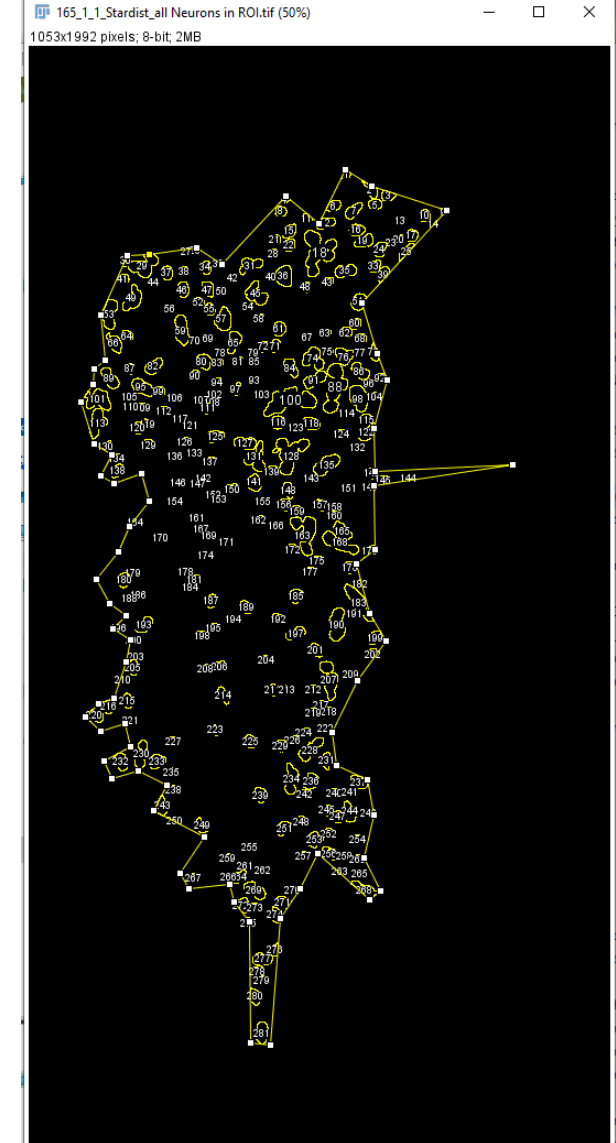
RFP and GFP signal overlay to draw ROI = ROI Area



Counting Cells with overlap of GFP and RFP signals = Edited Neurons



Counting GFP+ cells in ROI = # Neurons in ROI



Max Image Projection of 10um z-stack, Threshold = Otsu, Stardist2D to segment GFP+ neurons, particles > 40-infinity counted in ROI